



INSTALLATION & USER'S GUIDE

KTM DDS Damper Kit

Doc ID: 199-0213080

Revision: 050819

TABLE OF CONTENTS

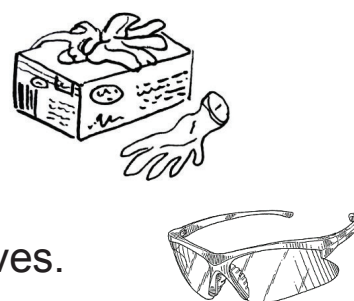
OVERVIEW	2
INSTALLATION TIPS	2
DISASSEMBLE THE CLUTCH	2
INSTALL NEW DAMPERS	4
MAINTENANCE	7
NEED ADDITIONAL HELP?	8

OVERVIEW

This guide shows you how to replace your used or worn hub dampers with new Rekluse dampers.

INSTALLATION TIPS

Read the safety information sheet included with your kit.



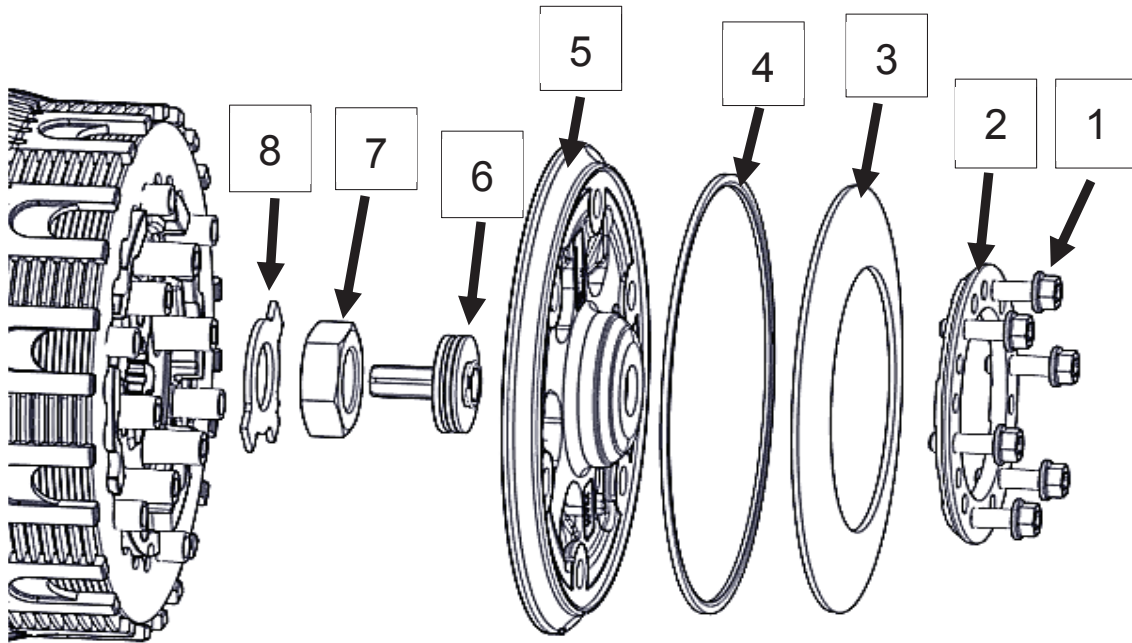
- Protect eyes and skin – wear safety glasses and thin disposable work gloves.
- Read this entire document before performing any steps.
- Lay the bike on its left side when replacing the dampers. This makes the clutch work easier and eliminates the need to drain the oil.
- Use clean, quality oil that meets JASO-MA or JASO-MA2 standards for best performance.

DISASSEMBLE THE CLUTCH

1. Lay the bike on its left side. Catch any fuel that might drain into a suitable container.
2. Remove the clutch cover.

Note: Take note of each OE cover bolt's location as length can vary between them. Failure to replace these bolts in the proper location during reinstallation can result in damage to your motorcycle.

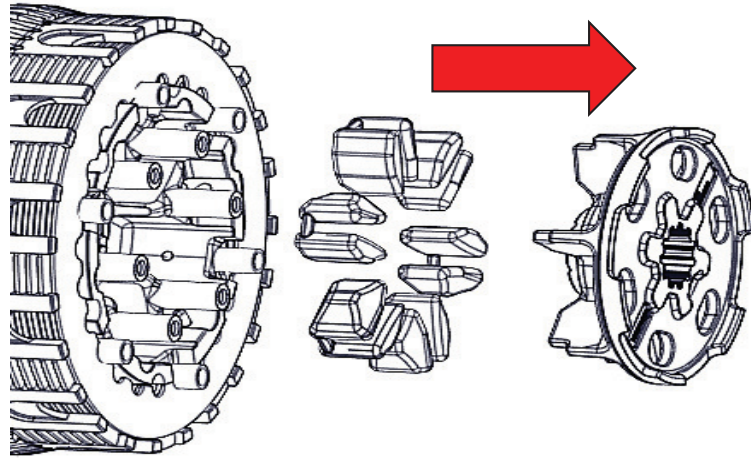
3. Remove the following parts from the clutch basket.



Note: The throw-out washer can stick to the back of the pressure plate. Be sure to reinstall the throw-out washer onto the throw-out when reinstalling the clutch.

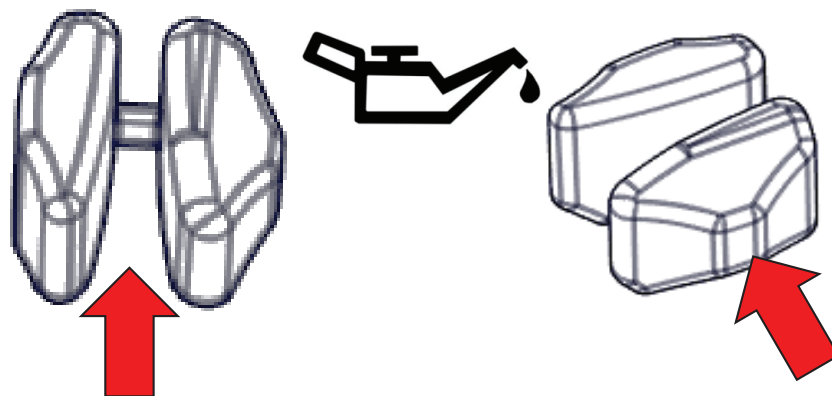
1	Pressure plate bolts
2	Spring ring
3	Belleville spring
4	Slider ring
5	Pressure plate
6	Throw-out assembly
7	Clutch nut
8	Clutch nut washer

4. Remove the inner hub, then remove the used/worn dampers or remove the used Rekluse dampers.



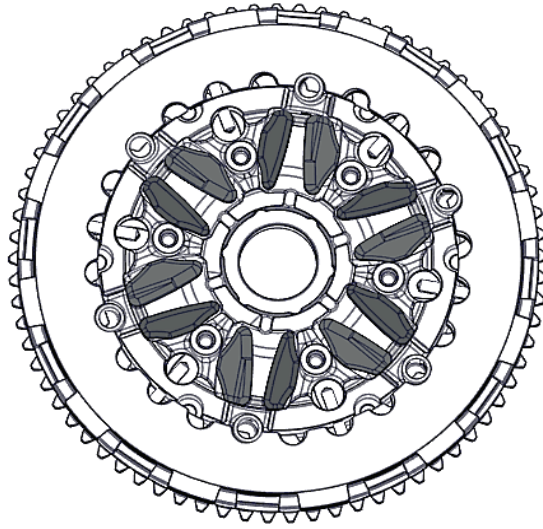
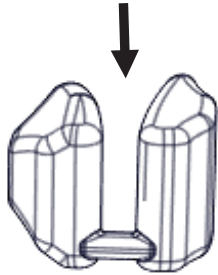
INSTALL NEW DAMPERS

1. Add a small amount of oil to the inside and outside surfaces of the new Rekluse dampers. *This will help make the installation easier.*

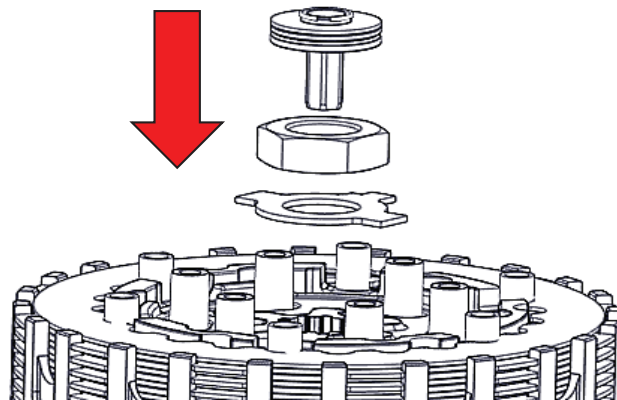


2. Install all the new Rekluse dampers into the outer hub.
The dampers should have the fully open end facing up.

Open end faces up



3. Reinstall the inner hub into the outer hub, taking care not to pinch the dampers as you fit the two hubs together.
4. Install the new Rekluse clutch nut lock tab washer, then reinstall the clutch nut.
5. Torque the nut to OE specifications or 50 ft-lbs, then bend the washer tab(s) up around the nut.
6. Reinstall the throw-out, bearing, and throw-out washer.

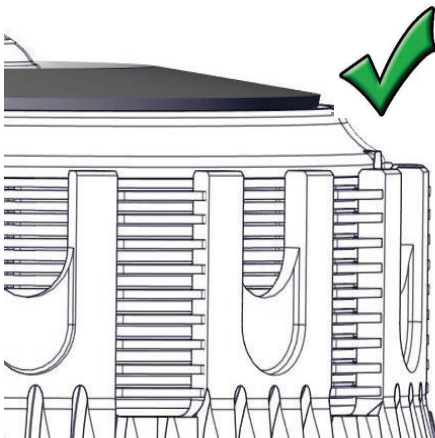


7. Reinstall the pressure plate, then reinstall the slider ring onto the pressure plate with the “top” marking facing up. (The top side is rounded and the bottom edge is sharp.)

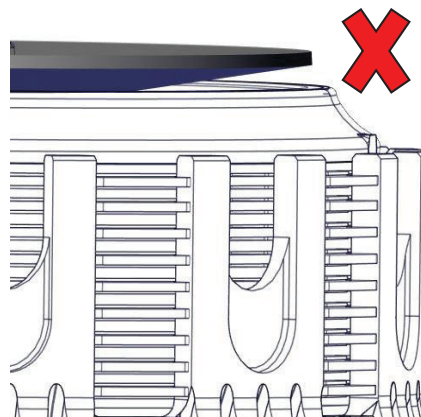


8. Place the Belleville spring onto the slider ring, with the rounded dome side facing up.

Note: *The outer edge of the Belleville spring will make contact with the slider ring. If it does not, the Belleville spring is upside down.*



Correct – The Belleville spring sits flat against the slider ring.



Incorrect – The Belleville spring is upside down.

9. Reinstall the spring ring, then reinstall the pressure plate bolts in the orientation that it was removed.
10. Torque the pressure plate bolts to OE specifications.
11. Reinstall the clutch cover.

MAINTENANCE

Dampers

Over time, the dampers inside the hub assembly will shrink due to heat and use. This is a normal wear item and should be **inspected every 30 hours**.

When this shrinkage occurs, the rotating action between the two hubs becomes loose or sloppy. This can cause hammering between the clutch parts which will reduce the life of the clutch. Use the following instructions to inspect the dampers.

1. Hold the center hub assembly in your hands, then place your thumbs on the inner hub by the embossed part numbers.
2. Rotate the inner hub back and forth inside the outer hub.



3. If there is any movement, replace the dampers.

NEED ADDITIONAL HELP?

Website

www.rekluse.com/support

Frequently Asked Questions

www.rekluse.com/faq

Support Videos

www.rekluse.com/support/videos

Phone

(208) 426-0659

Technical Support

Contact Technical Support for questions related to product installation, tuning, and performance.

Hours:

Monday thru Friday: 8:00 a.m. - 5:00 p.m.

Mountain Time zone

Email: tech@rekluse.com

Customer Service

Contact Customer Service for additional product information, orders, and returns.

Hours:

Monday thru Friday: 8:00 a.m. - 5:00 p.m.

Mountain Time zone

Email: customerservice@rekluse.com

